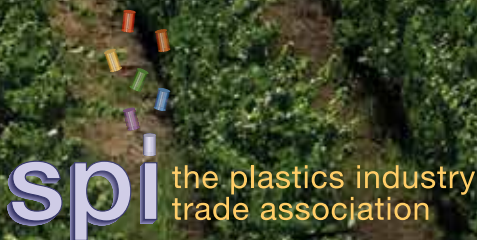
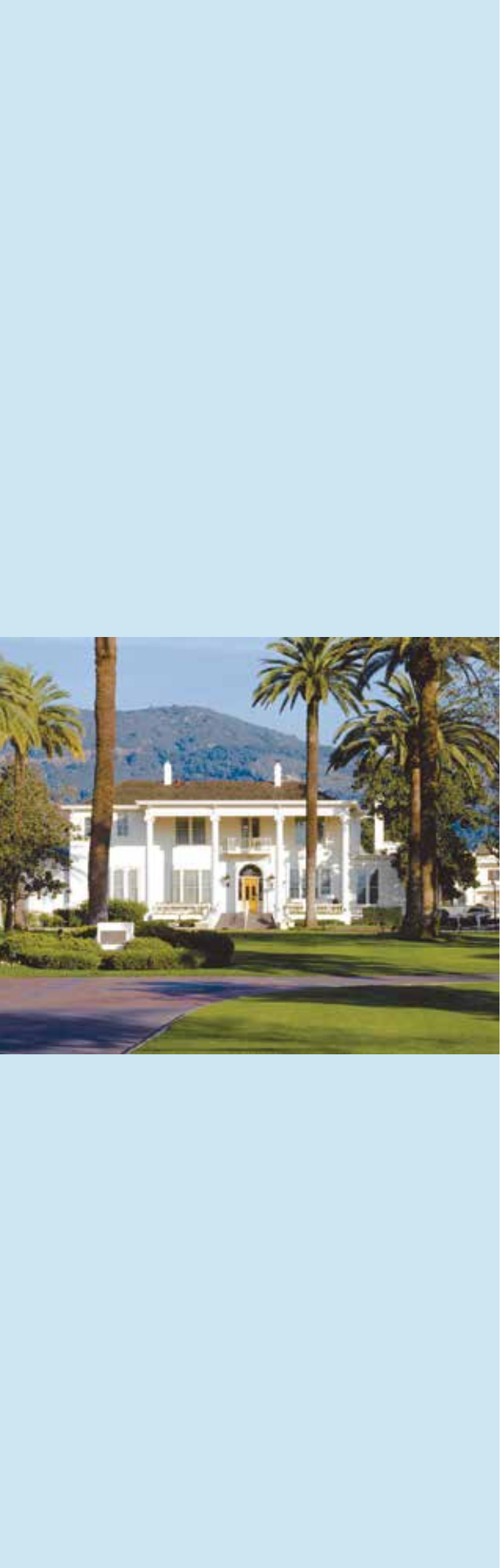


Machinery, Molders & Moldmakers 2008 Annual Business Conference

May 4–6, 2008
Silverado Resort & Spa
Napa, California





2008 Annual Business Conference

THE SPI MACHINERY, MOLDERS AND MOLDBMAKERS 2008 Spring Conference will bring together plastics industry leaders for three enriching days of information exchange, networking and professional development. Experts in the field will transfer their knowledge of the state of the industry for plastics machinery, equipment and molds to conference attendees seeking sound approaches, perspectives and actionable information. The conference will provide an economic forecast for the year ahead, show how new technologies will impact the way we will live and work in the future, and share strategies for competing successfully in the global marketplace. Sessions will equip participants with ideas and solutions to help them prosper in a challenging world.

Convening at the beautiful Silverado Resort & Spa in Napa, Calif., the conference will cover the global and domestic outlook for the industry’s customers, employees, competitors, and other stakeholders. The conference offers attendees a balance of substantive business sessions, networking opportunities, and interesting activities. Over just three days participants will:

- Discover what drives their customers and what they value
- Learn how RFID technology can help track assets around the world
- Gain valuable information about the 2008 Presidential election and how it will affect their business
- Acquire insight into the latest trends in corporate IT practices
- Hear about the latest industry initiatives underway at SPI and the latest developments for [NPE2009](#)
- Develop valuable tools for relating to a new generation entering the workforce

Finally, to cap off the event, this year our awards dinner will take place at Markham Winery. The Markham label is now synonymous with greatness, and a brief tour of their busy production facility gives visitors a rare look at the past, along with a glimpse of how consistent excellence can be achieved. From ancient barrels stacked in the original stone cellar to the contemporary feel of the tasting room and lobby, Markham is an evening experience that few other wineries can offer. Sit by the two-story stone fireplace or admire the winery’s art collection before enjoying a four course paired tasting menu.

conference program

Sunday, May 4

Noon – 5:00 p.m.	Registration
1:00 p.m. – 3:30 p.m.	CES Breakouts
3:30 p.m. – 4:30 p.m.	Machinery Division Board Meeting (Board members only)
3:30 p.m. – 4:30 p.m.	Molders Division Board Meeting (Board members only)
3:30 p.m. – 4:30 p.m.	Moldmakers Division Board Meeting (open to all moldmakers)
4:30 p.m. – 5:30 p.m.	CES General Meeting (open to all CES participating companies)
6:00 p.m. – 7:00 p.m.	Welcome Reception

Monday, May 5

7:00 a.m.	Registration opens
7:00 a.m. – 8:00 p.m.	Breakfast
9:30 a.m. – 11:030 a.m.	Spouse Guest Program & Brunch
8:00 a.m. – 8:15 a.m.	What We Did—What We’re Doing MMM Divisions 2007 Review SPI VP Equipment Council, Walt Bishop
8:15 a.m. – 8:45 a.m.	SPI Looking Ahead—2008 and Beyond SPI President and CEO, Bill Carteaux
8:45 a.m. – 9:00 a.m.	The Luck of the Draw Results of the NPE2009 Space Drawing and What It Means SPI VP Trade Shows, Gene Sanders
9:00 – 9:15 a.m.	BREAK
9:15 a.m. – 9:30 a.m.	New Products—New Value CES Chairman, Sandy Guthrie
9:30 a.m. – 10:45 a.m.	What the @#% Is Going On? Bill Wood, Mountaintop Economics
11:00 a.m. – 11:45 a.m.	Taking Flight—The Continuing Evolution of Plastics in the Aeronautical Industry Joe Jahn, Vaupell Industrial Plastics, Inc.

Noon – 1:30 p.m.	LUNCH & PRESENTATION We’re Off to the Races—2008 Elections Charlie Cook
2:00 p.m. – 6:00 p.m.	AFTERNOON ACTIVITIES 9 Hole Golf Shoot-out Winery(s) Tour Spa (on your own—or not)
7:00 p.m. – 10:00 p.m.	RECEPTION AND BBQ

Tuesday, May 6

7:00 a.m. – 8:15 a.m.	BREAKFAST
8:30 a.m. – 9:30 a.m.	Generation Why? Eric Chester
9:45 a.m. – 10:30 a.m.	RFID—Your Business, Your Future Dr. Bill Hardgrave, Executive Director, ITRI/RFID Research Center, University of Arkansas
10:30 a.m. – 11:15 a.m.	The Role of the Corporate Blog Tracy Betts, Balance Technology Group
11:15 a.m. – noon	Medical Molding—The ROI A panel discussion featuring representatives from molders, moldmakers and machinery/equipment manufacturers as they talk about the windfalls and pitfalls of medical molding.
1:00 p.m. – 5:30 p.m.	AFTERNOON ACTIVITIES Golf Tournament Art Gallery/Wine Tour Spa (on your own—or not)
6:00 p.m. – 10:00 p.m.	Banquet at Markham Winery Buses will start leaving the resort at 6:00 p.m. Reception starts 6:30 p.m., dinner starts at 7:00 p.m. Buses return to resort at 10:00 p.m.

Wednesday, May 7

8:00 a.m. – 10:00 a.m.	Continental Breakfast—informal departures There is time on this day for additional committee or other group meetings.
------------------------	--

VOTE

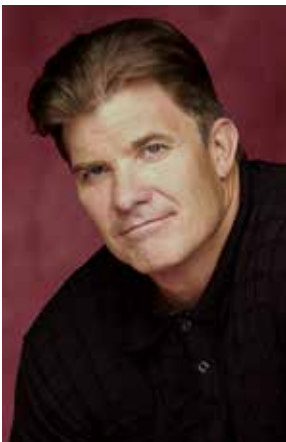


2008 election

Charlie Cook, Washington, D.C. insider and political pundit, will handicap the 2008 Presidential race and tell you how the November elections could affect your business during a special lunch presentation on Monday.

generation “why”

Eric Chester, generational expert, will share his knowledge of “Generation Why” and how you can better understand and relate to 16-24-year-olds entering today’s workforce.



new markets



aeronautics

The medical and aeronautical plastics markets are continually gaining steam with new innovations. Find out if investing in these fields is right for your company!

medical



rfid



new trends

blogs



How will Corporate Blogs and RFID change the way you are currently doing business? At the conference, you will learn the answer to this and other questions.

activities and tours

monday, may 5

SPOUSE ACTIVITY Sushi Cooking Class—\$60

Be prepared to sample the wonders of your own cooking! Enjoy our own professionally trained chef and his expertise teaching the wonders of making sushi. Take these secrets home and impress your guests and discover the ease of creating something special. Food preparation stations are set up for teams of two. Complete with rice, vegetables and protein, this is an interactive and fun event specially set up for your group. Be sure to pay attention as you get to eat what you complete!!! (Includes printed recipe and take-home sushi entertaining kit)

AFTERNOON ACTIVITY Artesa and Rutherford Hill Wineries Tour—\$105

As your vehicle climbs a winding incline to one of the highest points of the valley, you will be mystified at what lays in wait. Surrounded in graceful steel statues that emerge from the shimmer of reflecting pools stands Artesa. You will see an overhead view of all of the production stages of wine making from harvest to bottling. Then, perched high above the valley floor, you will visit Rutherford Hills, the leading maker of Napa Valley Merlots.

OTHER ACTIVITIES

Looking for other ways to explore Napa? Planning on spending a few extra days in wine country? To make the most out of your trip, be sure to speak with the Silverado Concierge. Hotel staff can help you book a trip on the Wine Train, www.winetrain.com, provide directions to COPIA The American Center for Wine, Food, and the Arts, www.copia.org, assist with an excursion to your favorite winery, or set-up any number of other unique activities to help make this a trip to remember!

tuesday, may 6

AFTERNOON ACTIVITY Clos Pegase and Mumm Wineries and Art Galleries Tour—\$100

At first glance you may wonder, “Is it real?” Cast your aversions aside and approach the Clos Pegase temple of wine with its precise lines, slopes, and vibrant earth-tone coloring nothing short of magnificent. Following a production tour, the visual intensity increases as you revel in the art collection that flows seamlessly from wall to floor and continues into the winery’s 20,000 square feet of aging caves. Then, visit Mumm Winery and Vineyard for more visually stunning architecture, art, and Mumm’s signature sparkling wine.

GOLF MONDAY HALF COURSE—\$85 TUESDAY ANNUAL TOURNAMENT—\$135

Feel like hitting the links? The Tuesday golf event is the official conference 18-hole tournament. It will be a “Shambles” four man format. There is also a half course event for some afternoon fun and practice for the tournament on Monday. We will be playing on the Silverado Resort’s PGA-quality courses. The fees, greens, and cart fees are included. Please include your handicap on the registration form. Golf clubs and shoe rentals are available through the club.

general information

SILVERADO RESORT & SPA

SPI is holding a block of rooms at the Silverado Resort & Spa in Napa, Calif. A historic 1,200 acre destination resort set in the rolling sunny hills of the wine country, Silverado is just minutes away from downtown Napa and some of the finest vineyards in the country. Along with two PGA-quality, 18-hole golf courses, the property also features the largest private spa in the region. Scenery and serenity. Recreation and relaxation. Fine wines and gourmet cuisine. Silverado has it all.

The special rate extended for conference attendees is \$220 for single/double Run of the House rooms (the regular room rate for guests of resort is over \$350 per night). All rooms are subject to all applicable sales taxes and a resort fee of \$10 per day (regular resort fee \$20 per day). The hotel cutoff date is Friday, April 11, 2008. After this date, reservations are on space availability basis only. To make reservations, please call the hotel directly at (800) 532-0500. Be sure to mention that you are with the Society of the Plastics Industry to receive this special rate.

MEETING ATTIRE

Meetings Dress is resort casual
Monday Night Barbecue Theme Reception and Dinner is casual. Jeans are OK.
Golf Tournament Collared shirts and khakis or Bermuda shorts (no jeans) Soft Spikes.
Tuesday Night Reception and Dinner Semi-formal attire, Black Tie optional. Children under 18 are encouraged not to attend.

AIRPORT TRANSPORTATION

The Silverado is convenient to San Francisco (65 miles), Oakland (50 miles), and Sacramento (70 miles) airports. Please see www.silverado.com for more information. Maps and directions will be sent to conference attendees prior to the arrival. Additionally, one-way transfers to/from these local airports can be arranged through the hotel Destination Services for \$265. Call (707) 257-0200 for more information.

If you will be renting a car, SPI has an affinity program with Hertz.* Please call Will Scott for more information.

MEETING CANCELLATION POLICY

- If for any reason you must cancel your participation in this meeting, written notice is needed at least:
- One month prior to the conference in order to receive a 100 percent refund
 - Three weeks prior to receive a 75 percent refund
 - Two weeks prior to receive a 50 percent refund
 - One week prior to receive 25 percent refund

Should you fail to notify the division about your cancellation prior to the meeting, you will forfeit all registration fees.

REGISTRATION DEADLINE

Registrations may be mailed to the following address:

SPI Machinery and Moldmakers Divisions
Will Scott
1667 K Street, NW Suite 1000
Washington, D.C. 20006

or faxed to: (202) 293-0236.

All registrations must be received by April 28, 2008. Faxed registrations received without payment are subject to a late fee after this date.

SPECIAL FEATURES

An excellent way to enjoy Silverado’s natural beauty is to play the two, 18-hole Napa Valley Wine Country golf courses, each in the distinctive style of their architect, Robert Trent Jones, Jr. These premier Napa Valley golf resort courses cover 360 acres and feature lush vegetation, ponds, lakes, three sweet water creeks, trees arching over the fairways and artfully placed traps and greens. Additionally, The Spa at Silverado, a luxury 16,000-square-foot complex is the largest private resort spa in Napa Valley and is available exclusively for Silverado Resort guests and Club members. Inspired by the serene sophistication of a classic Roman spa, The Spa at Silverado offers fitness, spa and salon services surrounded by tranquil garden courtyards and breathtaking scenic views right in the heart of Napa Valley. Also, Silverado Resort invites you to enjoy world-class tennis in the heart of Napa Valley and unlimited use of one of the finest tennis centers found not only in the Napa Valley but in the west with 17 immaculate, plexi-pave tennis courts (3 courts are lighted).

ROOM FEATURES

Drawing on the natural beauty of its location, the resort features elements of the lush valley and far-reaching landscape throughout its design. Accommodations at Silverado are fully appointed suites. Each includes a full kitchen dining area, living room with fireplace, and master bedroom and bath. Each unit has either a private patio or deck, and wireless Internet.



1667 K St. NW, Suite 1000
Washington, DC 20006-1620
www.plasticsindustry.org

© 2008 The Society of the Plastics Industry, Inc. All rights reserved.
Photos: © Cover: Randy Miramontez | Airliner: Ivan Cholakov | Four Young People: Losevsky Pavel | Harvest Grapes: Terrance Emerson | Keyboard: R | Lab Technician: Répási Lajos Attila | Mouse: mearicon | Operating Room: beerkoff | RFID Tag: Albert Lozano | Sushi: fridamarja | Student: Diego Cervo | Vineyard: michael ledray | Vote Button: Carsten Reisinger | White House: Travel Bug | Silverado Resort & Spa | Charlie Cook/Leading Authorities, Inc. | Eric Chester/Keppler Speakers



registration form

Fax completed form to Will Scott at (202) 293-0236. Questions? Call (202) 974-5296.

Event	No. of Attendees	Fees	Total
SPI Member First Time Attendee	<input type="text"/>	<input type="text"/> × \$550 = \$	
SPI Member Early Registration (register by April 11, 2008)	<input type="text"/>	<input type="text"/> × \$700 = \$	
SPI Member Regular Registration (register by April 25, 2008)	<input type="text"/>	<input type="text"/> × \$800 = \$	
Nonmember Registration	<input type="text"/>	<input type="text"/> × \$900 = \$	
Spouse/Guest Registration	<input type="text"/>	<input type="text"/> × \$400 = \$	
Additional Guests for Monday Dinner (Children under 12 are free)	<input type="text"/>	<input type="text"/> × \$125 = \$	
Additional Guests for Tuesday Dinner (Must be 18 or older)	<input type="text"/>	<input type="text"/> × \$125 = \$	

Activities			
Golf (9-hole, May 5)	Member Handicap: <input type="text"/>	Guest Handicap: <input type="text"/>	<input type="text"/> × \$85 = \$
Golf (18-hole Tournament, May 6)	Member Handicap: <input type="text"/>	Guest Handicap: <input type="text"/>	<input type="text"/> × \$135 = \$
Artesan and Rutherford Hill Wineries Tour (May 5)			<input type="text"/> × \$105 = \$
Clos Pegase and Mumm Wineries Art Gallery Tour (May 6)			<input type="text"/> × \$100 = \$
Spouse Activity: Sushi Cooking Class (May 5)			<input type="text"/> × \$60 = \$

GRAND TOTAL	\$ <input type="text"/>
-------------	-------------------------

NAME

GUEST NAME

COMPANY

ADDRESS

CITY/STATE/ZIP CODE

TELEPHONE

FAX

E-MAIL

BADGE NAME

SPOUSE/GUEST BADGE NAME

ADD'L. GUEST BADGE NAME

☐ FIRST TIME ATTENDEE ☐ SPECIAL NEEDS (PLEASE SPECIFY)

Please RSVP for the following functions

Sunday, May 4, 2008

Welcome Reception ☐ Attendee ☐ Spouse/Guest

Monday, May 5, 2008

Breakfast ☐ Attendee ☐ Spouse/Guest

Lunch with Charlie Cook ☐ Attendee ☐ Spouse/Guest

Reception and Dinner ☐ Attendee ☐ Spouse/Guest

Tuesday, May 6, 2008

Breakfast ☐ Attendee ☐ Spouse/Guest

Reception and Banquet ☐ Attendee ☐ Spouse/Guest

Payment Information

☐ Check enclosed (payable to SPI/Machinery Division)

Bill my ☐ Visa/MasterCard ☐ American Express

\$

CARDHOLDER NAME

AUTHORIZED AMOUNT

CARD NUMBER

EXPIRATION DATE

SIGNATURE

DATE